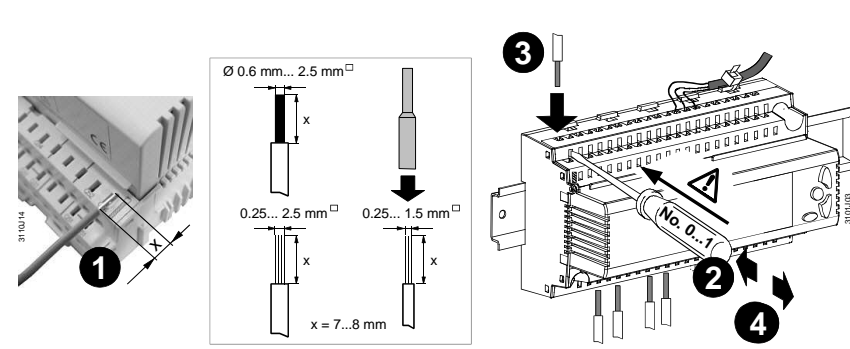
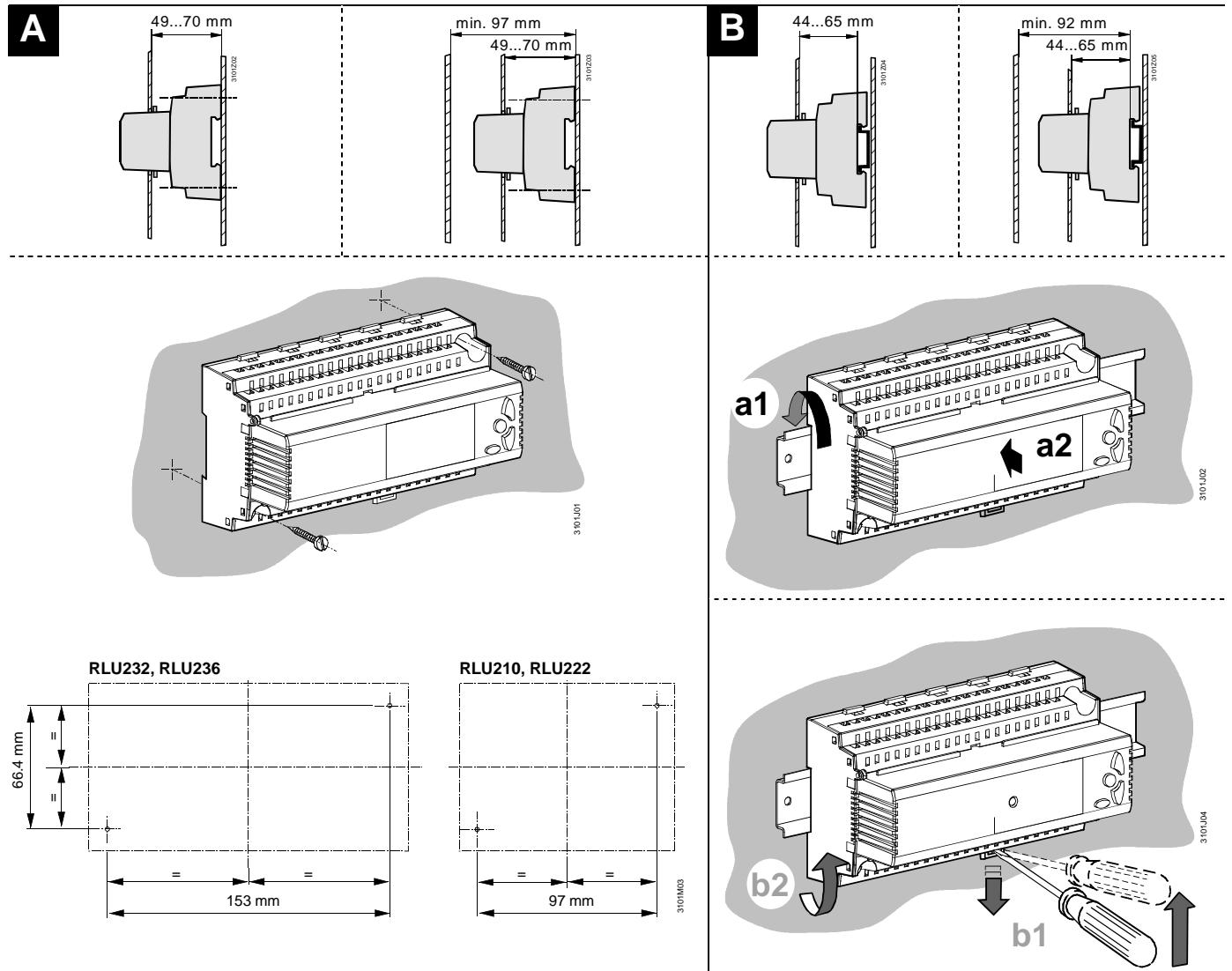


EST – PAIGALDAMINE

Montage Montage Montage Asennus Montering Fitting

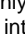


⚠
Feder nur bis zum spürbaren Anschlag betätigen
Push spring only until mechanical stop is felt.
Paina jouta vain mekaaniseen rajoittimeen asti.
Vajuta vedru kuni mehhaanilise piirajani.

en**Electrical installation**

Ensure that the electrical installation complies with the relevant local safety regulations.


Make wiring in accordance with the plant diagram.

Each connection terminal can accommodate only one wire. Double terminals on the controller () are internally interconnected.

ES
Tr**ELEKTRILINE ÜHENDAMINE**

Installatsioonil tuleb täita kõiki kohalikke määrusi ja reegleid.

Ühendused teha vastavalt kasutatava regulaatori skeemile (vt variandid allpoolt).

Ühe kontakti (vedru) alla saab paigaldada vaid ühe juhtme. Sisemise ühendusega ahelad on tähistatud (),

de**Elektrische Installation**

Die elektrische Installation ist nach den örtlichen Vorschriften durchzuführen.

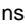
Die Verdrahtung erfolgt nach dem Anlageschaltplan.


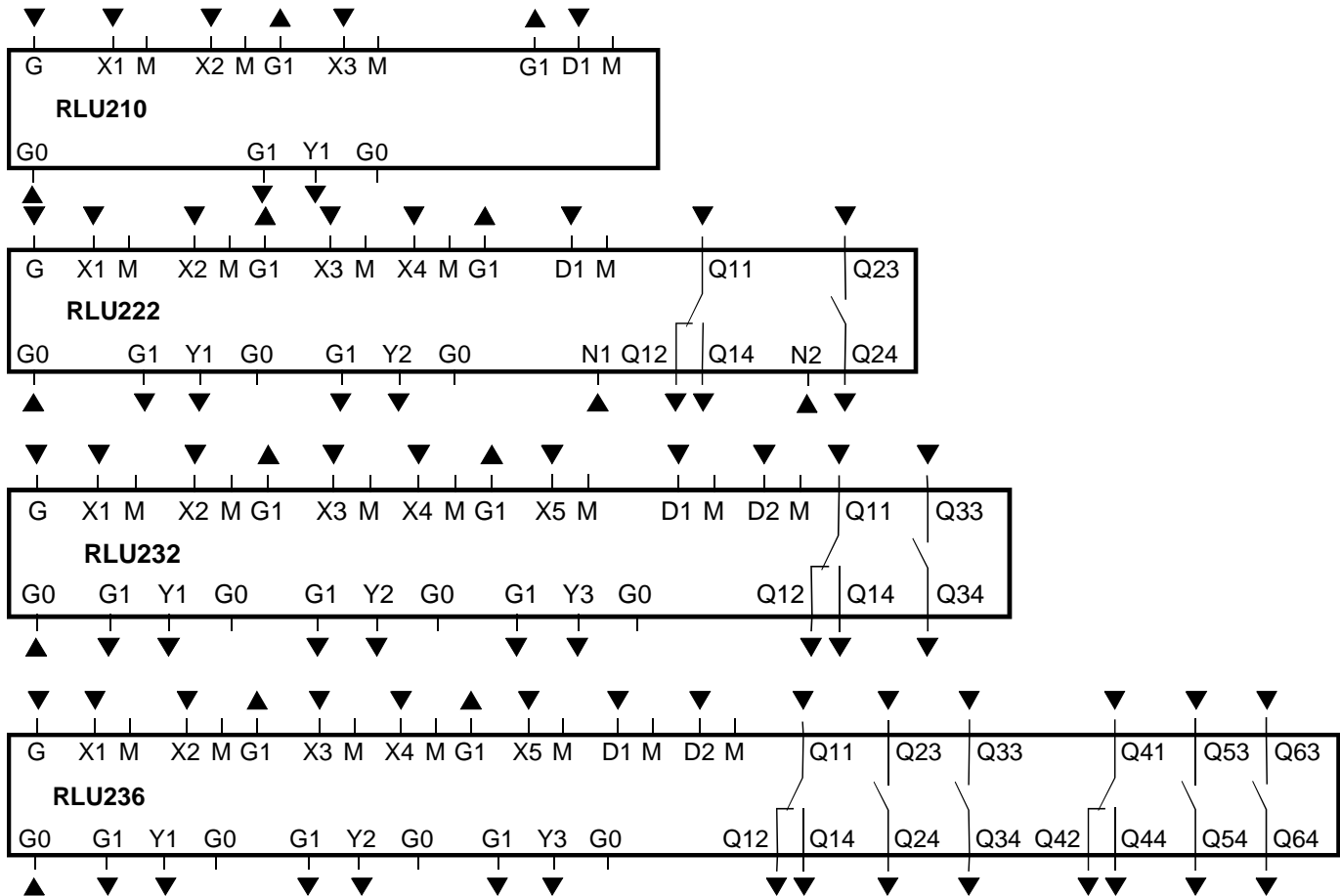
Pro Klemme darf nur ein Draht zugeführt werden. Doppelklemmen

fi**Sähköasennukset**

Sähköasennukset on tehtävä paikallisten määräysten mukaisesti.

Johdotus tehdään laitoksen kytkentäkaavion mukaisesti.

Kuhunkin liittimeen saa liittää vain yhden johtimen. Säätimen kaksoisliittimet () on kytketty laitteensisäisesti sähköisesti toisiinsa

am Gerät ()

de Inbetriebnahme

Beim ersten Aufstarten

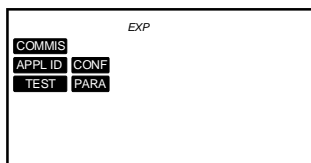
1. Spannung anlegen.

Während dieser Inbetriebnahme bleibt die Regelung ausgeschaltet.

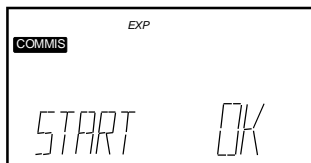
Sämtliche Sicherheitsfunktionen sind ebenfalls ausgeschaltet!

Sobald der Regler hochgefahren ist, erscheint das Menü

COMMIS (Inbetriebnahme) mit blinkendem Untermenü **APPL ID** (Grundtyp):



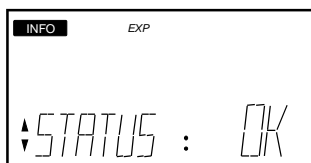
2. Drücken Sie 2x die OK-Taste, worauf das Eingabefeld für den Grundtyp blinkt
3. Wählen Sie mit den Navigations-Tasten (+/-) den Grundtyp und bestätigen Sie diesen durch Drücken der OK-Taste
4. Wählen Sie ggf. das Untermenü **CONF**, um das Anpassen der Konfiguration vorzunehmen
5. Wählen Sie ggf. das Untermenü **PARA**, um das Anpassen der Parameter-Einstellungen (Defaultwerte) vorzunehmen
6. Wählen Sie das Untermenü **TEST**, um den Verdrahtungstest durchzuführen (wird empfohlen!). Prüfen Sie die Ein- und Ausgänge. Die Ausgänge werden simuliert.
Achtung! Die Sicherheitsfunktionen sind ausgeschaltet
7. Verlassen Sie das Menü **COMMIS** (Inbetriebnahme) durch Drücken der ESC-Taste. Es erscheint folgendes Hinweisbild:



8. Drücken Sie die OK-Taste. Die Anwendung wird gestartet, alle Fühler werden überprüft, vorhandene Fühler werden für spätere Störungsmeldungen markiert. Es erscheint folgendes Menü:



9. Wählen Sie mit den Navigations-Tasten (+/-) das Menü **SET** und nehmen Sie die Betreibereinstellungen für die Sollwerte vor. Falls erforderlich, optimieren Sie Einstellungen im Menü **PARA**.
10. Drücken Sie 2x die ESC-Taste. Befindet sich der Regler im Normalbetrieb, erscheint eine Info-seite, z. B.:



Hinweise:

- Das Menü **COMMIS** (Inbetriebnahme) ist nur in der Passwortebene (Passwort = 2) aktiv
- Es gibt 3 Zugriffsebenen:
 - Endbenutzerebene **INFO**
 - Serviceebene **SERVICE**
 - Passwortebene **EXP**
- Bei gleichzeitigem Drücken der ESC-Taste und der OK-Taste, ist ein Ebenenwechsel möglich

en Commissioning

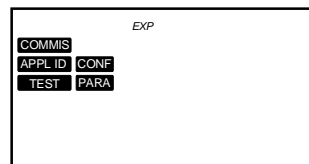
First startup

1. Switch on power supply.

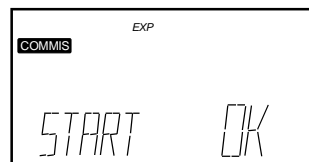
During commissioning, the control system remains deactivated.

All safety functions also remain deactivated!

When controller startup is completed, the **COMMIS** (commissioning) menu with flashing **APPL ID** submenu (basic type) appears:



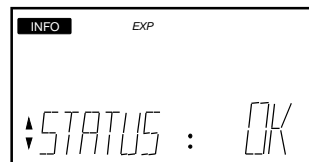
2. Press the OK button twice. The entry field for the basic type starts flashing.
3. Select the basic type with the navigation buttons (+/-) and confirm it by pressing the OK button.
4. If required, select the **CONF** submenu to adapt the configuration.
5. If required, select the **PARA** submenu to adapt the parameter settings (default values).
6. Select the **TEST** submenu to make the wiring test (recommended!). Check the inputs and outputs. The outputs will be simulated.
Caution! Safety functions are deactivated.
7. Quit the **COMMIS** menu by pressing the ESC button. The following display appears:



8. Press the OK button. The application is started, all sensors will be checked and existing sensors will be highlighted for future fault status messages. The following menu appears:



9. Select the **SET** menu with the navigation buttons (+/-) and make the setpoint adjustments as required by the building operator. If required, optimize the settings on the **PARA** menu.
10. Press the ESC button twice. If the controller is in normal operation, the info page will appear, e.g.:



Notes:

- The **COMMIS** menu is only active on the password level (password = 2)
- There are 3 access levels:
 - Enduser level **INFO**
 - Service level **SERVICE**
 - Password level **EXP**
- The level can be changed by pressing the ESC and OK buttons simultaneously

fi Käyttöönotto

Kun käynnistät laitteen ensimmäisen kerran

1. Kytke jännitteensyöttö päälle.

Käyttöönoton aikana säätö on kytketty pois päältä.

Myös kaikki turvatoiminnot ovat pois toiminnasta!

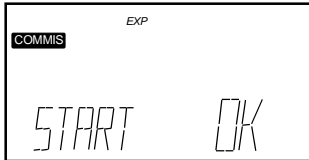
Heti kun säätimen käyntiajo on valmis, näytölle ilmestyy valikko

COMMIS (käyttöönotto), jossa näkyy vilkkuvana alavalikko

APPL ID (laitostyyppi):



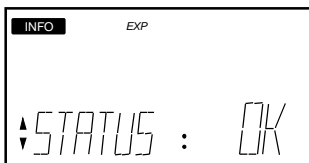
2. Paina 2 kertaa OK-painiketta, niin että laitostyyppin syöttökenttä alkaa vilkkua.
3. Valitse navigointipainikkeilla (+/-) laitostyyppi, ja vahvista valinta painamalla OK-painiketta.
4. Valitse alavalikko **CONF**, jos konfiguraatiota tarvitsee muuttaa.
5. Valitse alavalikko **PARA**, jos asetuksia (oletusarvoja) tarvitsee muuttaa.
6. Valitse alavalikko **TEST** tehdäksesi johdotuksen testauksen (suositeltavaa!).
Tarkista tulot ja lähdöt. Lähdöt simuloidaan.
Varoitus! Turvatoiminnot ovat pois toiminnasta.
7. Poistu valikosta **COMMIS** (käyttöönotto) painamalla ESC-painiketta. Seuraavanlainen näyttö tulee esiin:



8. Paina OK-painiketta.
Sovellus käynnistyy, kaikki anturit tarkistetaan ja olemassa olevat anturit merkitään myöhempiä häiriöilmoituksia varten. Seuraavanlainen näyttö tulee esiin:



9. Valitse navigointipainikkeilla (+/-) valikko **SET**, ja tee asetusarvoihin rakennuksen käyttäjän tarvitsemat muutokset.
Tarvittaessa optimoi asetukset valikossa **PARA** (asetukset).
10. Paina 2 kertaa ESC-painiketta.
Jos säädin on normaalkäytössä, näytölle ilmestyy infosivu, esim.:



Huomautuksia:

- Valikko **COMMIS** (käyttöönotto) on aktiivinen ainoastaan salasana-tasolla (salasana = 2).
- Pääsytasoja on 3:
 - Loppukäyttäjän taso **INFO**
 - Huoltotaso **SERVICE**
 - Salasana-taso **EXP**
- Voit vaihtaa tasoa painamalla samanaikaisesti ESC- ja OK-painiketta.

est KÄITAMINE

ESMAKÄIVITUS

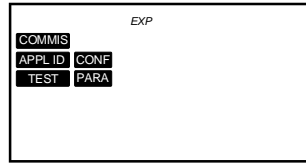
1. Pingesta regulaator.

Regulaator ei toimi seadistamise ajal!

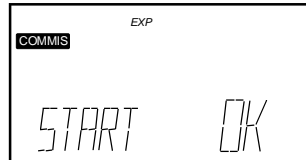
Ka ei toimi häire ja avarii funktsioonid

Kui regulaatori käivitub, ilmub displeile valik **COMMIS**

(seadistamine), milles vilgub alavalik (põhiskeemi e. põhirežiimi valik) **APPL ID** :



2. Vajuta 2 korda OK-nupp, nii et vilkuma hakkaks põhifunktsiooni valiku ala displeil.
3. Vali (+/-) nuppudega soovitud tüüp ja kinnita see vajutades OK-nupp.
4. Vali menüü **CONF**, juhul, kui valitud skeem (tüübid toodud allpool) ei vasta teie vajadustele. Kui vastavus on ühene saab selle etapi vahele jätta. Teosta vajalikud muutused sisendite, kontrolleri, agregaatide ja väljundite juures.
5. Vali alammenüü **PARA**, kui on vaja muuta tehases installeeritud seadesuursusi.
6. Vali menüü **TEST** et katsetada väljundid ja et veenduda, et andurid on ühendatud õigesti. Soovitatav on seda teha! Katseta. Väljundid simuleeritakse vastavalt Teie valikule. .
Hoiatus! Ohutus ja avariifunktsioonid ei ole aktiivsed!
7. Välju **COMMIS** (seadistamine) menüüst vajutades ESC-nupp. Displeile ilmub:

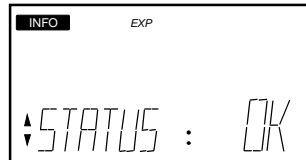


8. Vajuta OK-nupp.
Valitud reguleerimisskeemile vastav režiim käivitub, Kõik andurid helistatakse läbi ja fikseeritakse mälus selleks et nende vea korral anda häire.

Displeile ilmib:

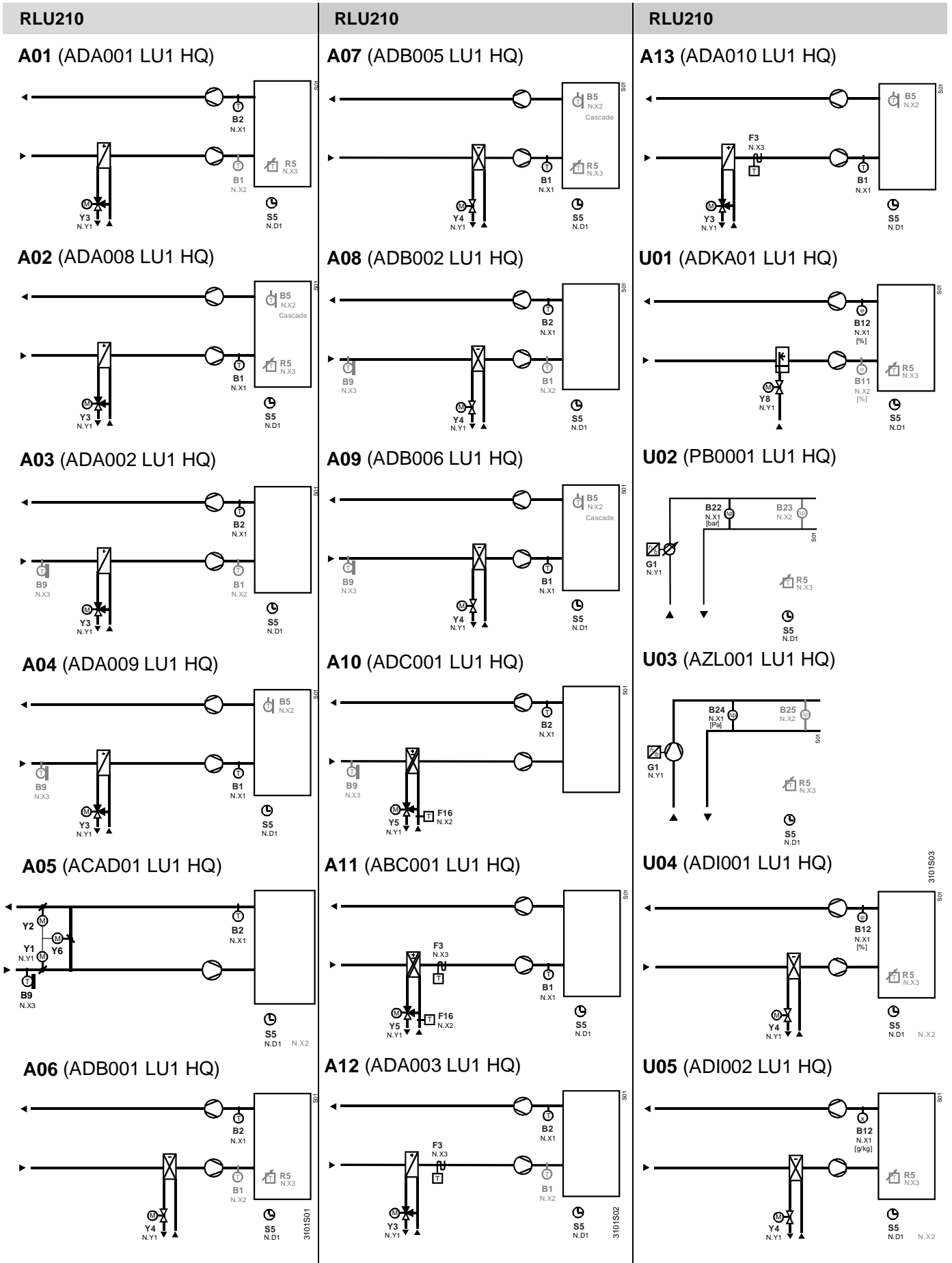


9. Vali (+/-) nuppudega menüü **SET**, ja tee seadeparaameetritele vajalikud muudatused..
Vajaduse korral optimeeri nad menüüs **PARA** (seadesuursusedt).
10. Vajuta 2 korda ESC-nupp.
Kui regulaator on korras ja töötab, ilmub displeile kasutajataseme info menüü koos tekstiga, näiteks:



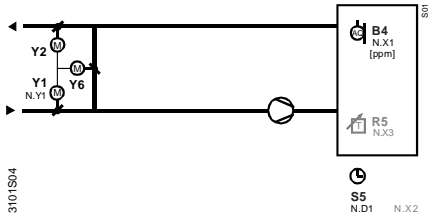
Hoiatus!

- Menüü **COMMIS** (seadistamine) on aktiivne alles koodi (2) sisestamisel.
- Regulaatoril on 3 nn taste:
 - Kasutajataste **INFO**
 - Seadistamise tase **SERVICE**
 - Konfigureerimise e. Eksperdi tase **EXP**
- Tase on muudetav vajutades samaaegselt ESC- ja OK-nupp.



RLU210

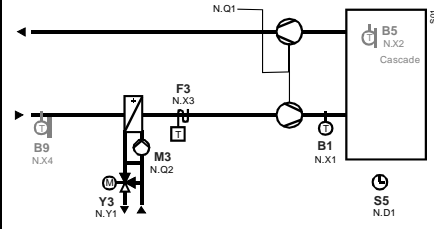
U06 (AAZD01 LU1 HQ)



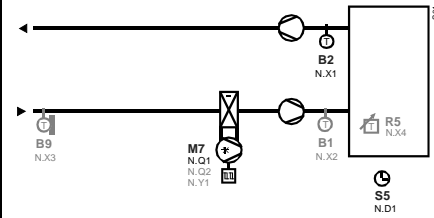
3101S04

RLU222

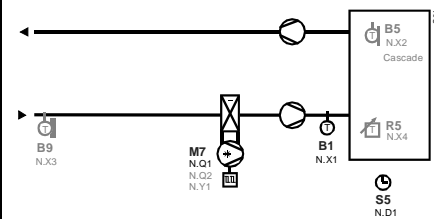
A06 (ADA011 LU2 HQ)



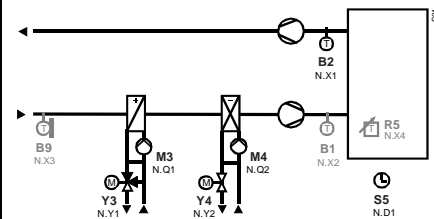
A07 (ADB003 LU2 HQ)



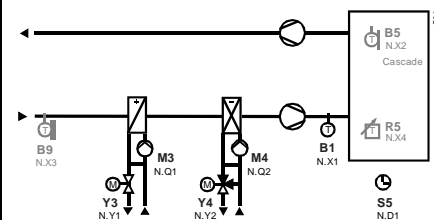
A08 (ADB007 LU2 HQ)



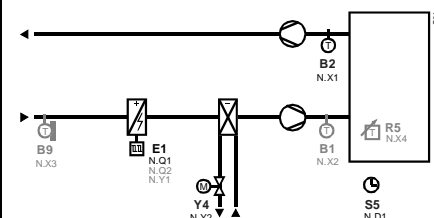
A09 (ADC002 LU2 HQ)



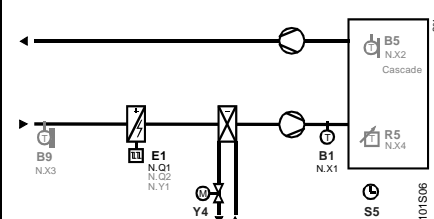
A10 (ADC010 LU2 HQ)



A11 (ADC004 LU2 HQ)

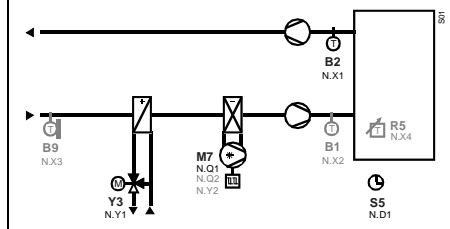


A12 (ADC012 LU2 HQ)

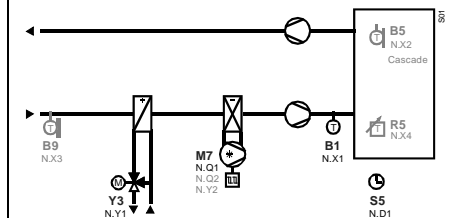


RLU222

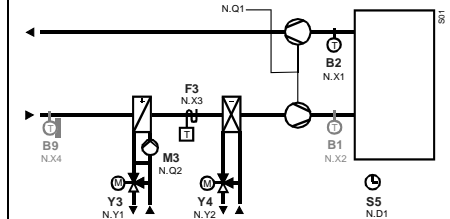
A13 (ADC003 LU2 HQ)



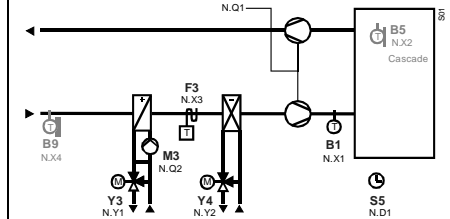
A14 (ADC011 LU2 HQ)



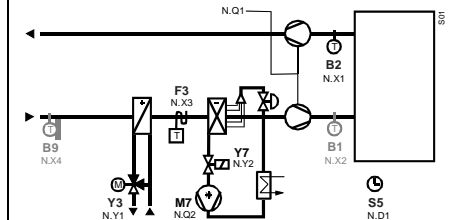
A15 (ADC006 LU2 HQ)



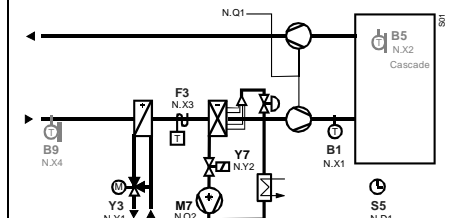
A16 (ADC014 LU2 HQ)



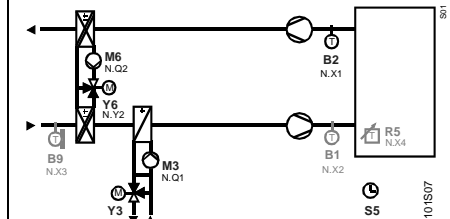
A17 (ADC007 LU2 HQ)



A18 (ADC016 LU2 HQ)

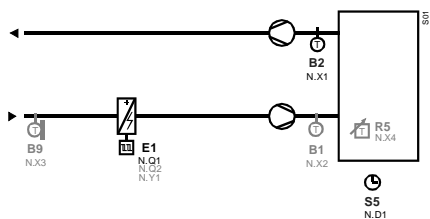


A19 (AEAG01 LU2 HQ)

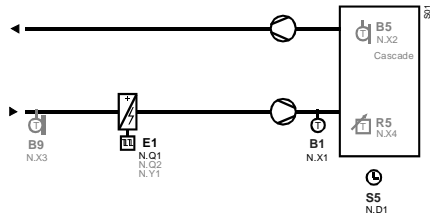


RLU222

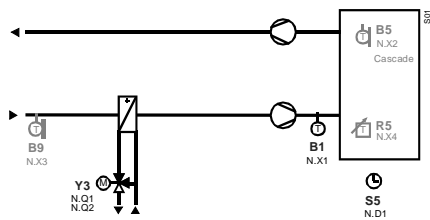
A01 (ADA006 LU2 HQ)



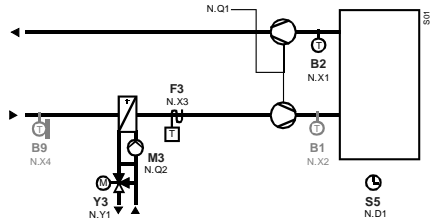
A02 (ADA012 LU2 HQ)



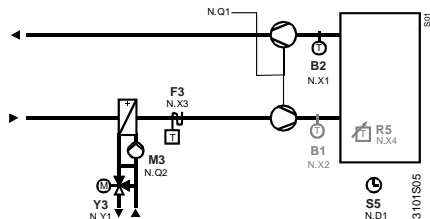
A03 (ADA014 LU2 HQ)

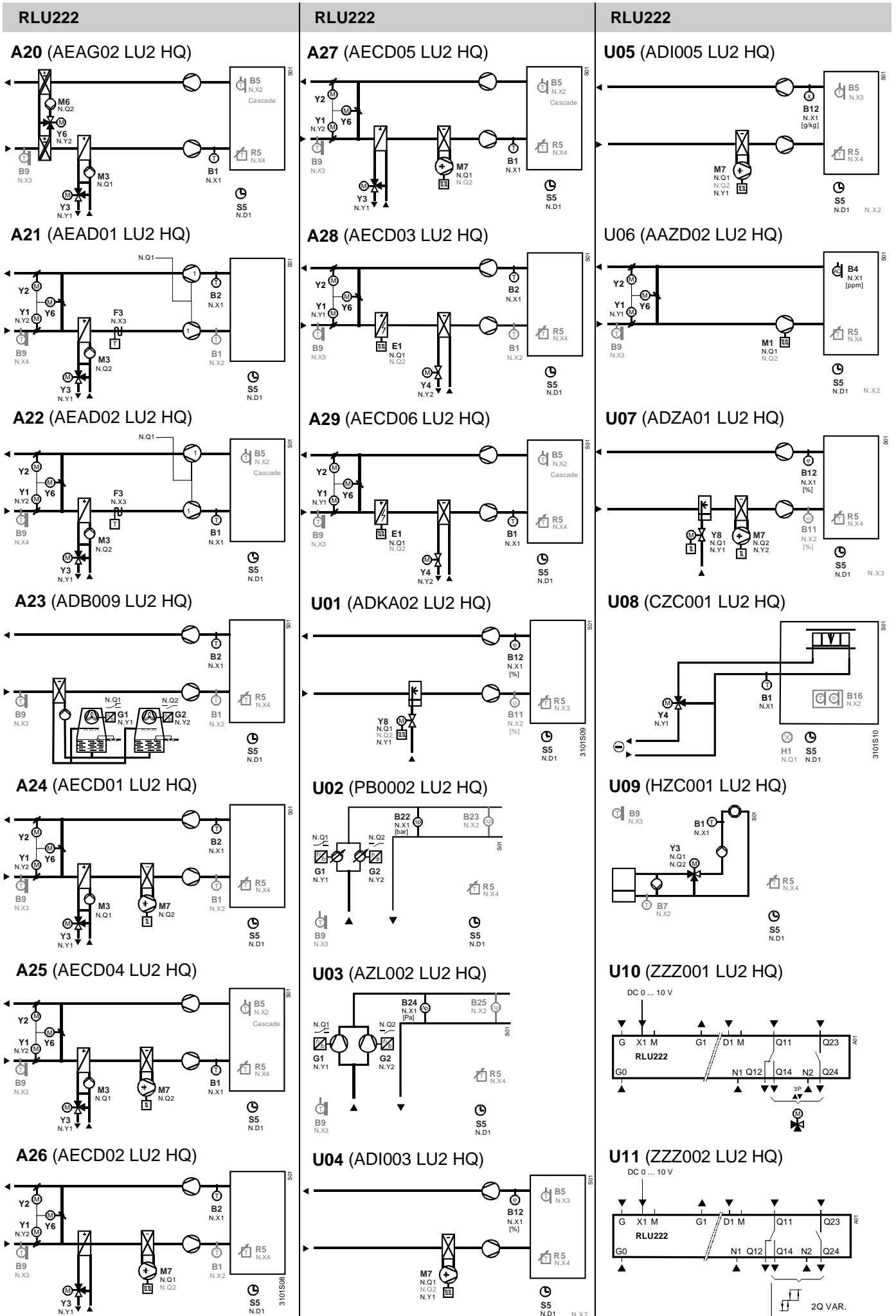


A04 (ADA004 LU2 HQ)



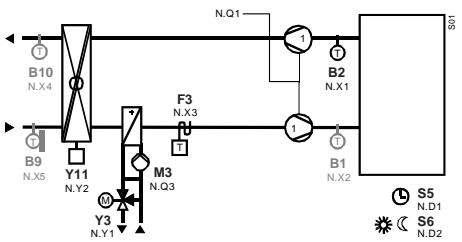
A05 (ADA005 LU2 HQ)



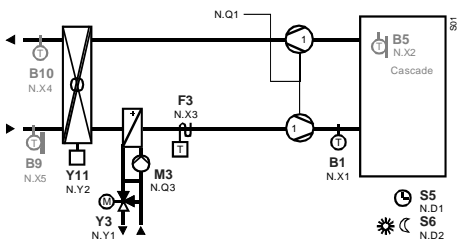


RLU232

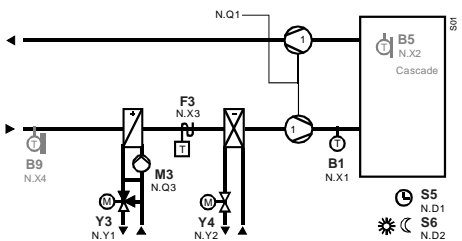
A01 (AEAF01 LU3 HQ)



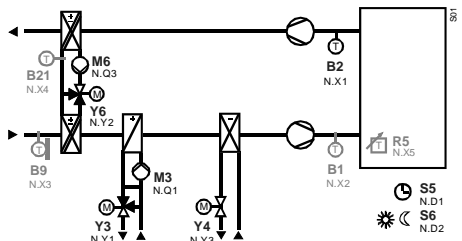
A02 (AEAF02 LU3 HQ)



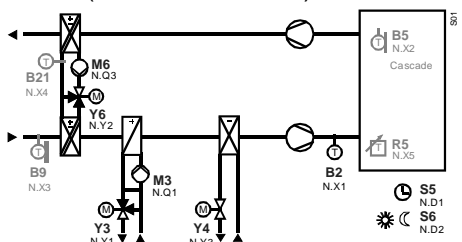
A03 (ADC015 LU3 HQ)



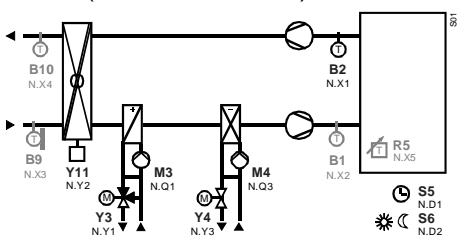
A04 (AECG01 LU3 HQ)



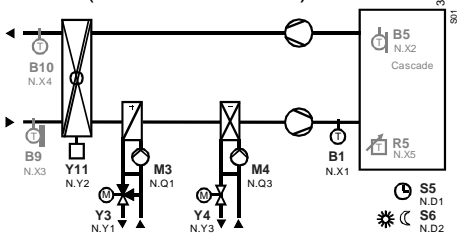
A05 (AECG02 LU3 HQ)



A06 (AECF01 LU3 HQ)

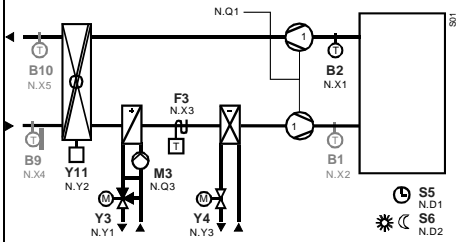


A07 (AECF03 LU3 HQ)

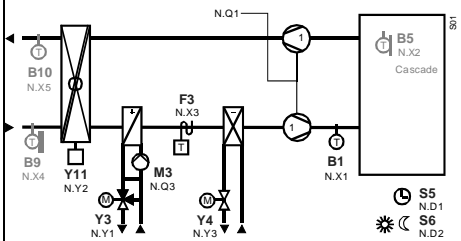


RLU232

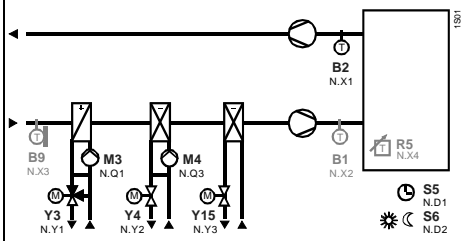
A08 (AECF02 LU3 HQ)



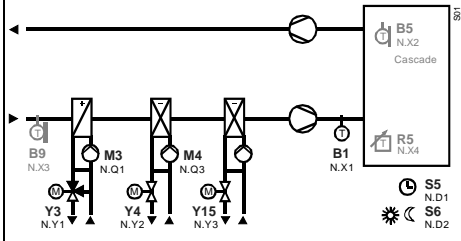
A09 (AECF04 LU3 HQ)



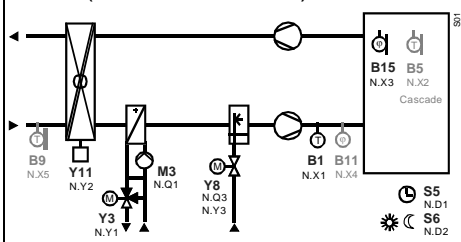
A10 (ADC009 LU3 HQ)



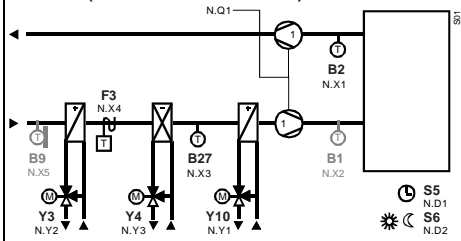
A11 (ADC018 LU3 HQ)



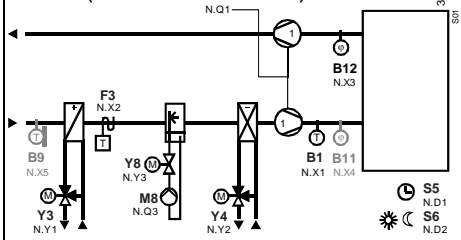
A12 (AEDK01 LU3 HQ)



A13 (ADE001 LU3 HQ)

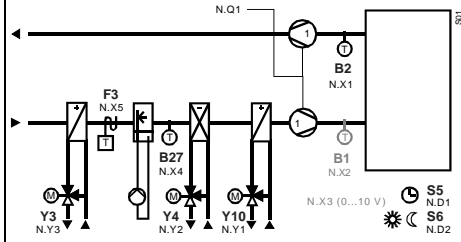


A14 (ADFA01 LU3 HQ)

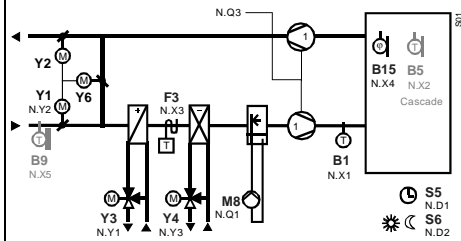


RLU232

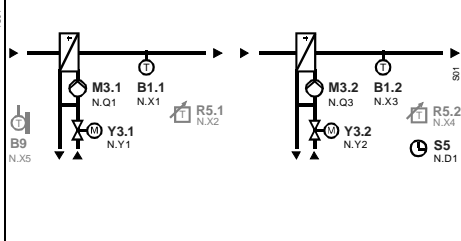
A15 (ADFA02 LU3 HQ)



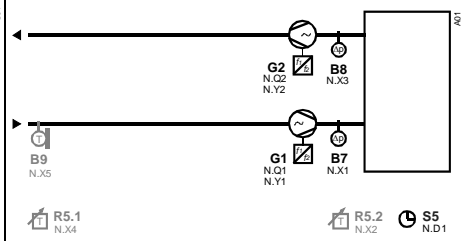
A16 (AEFH01 LU3 HQ)



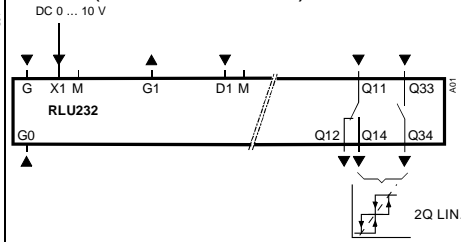
U01 (ABA001 LU3 HQ)



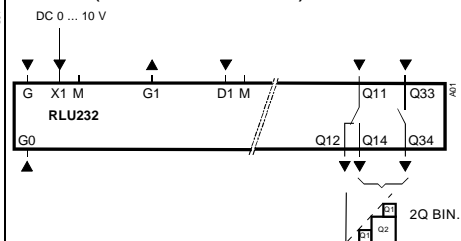
U02 (ADL001 LU3 HQ)



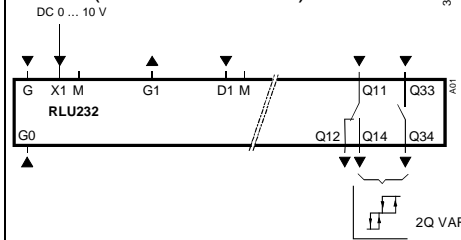
U03 (ZZZ003 LU3 HQ)



U04 (ZZZ004 LU3 HQ)

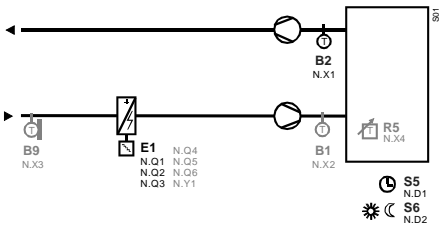


U05 (ZZZ005 LU3 HQ)

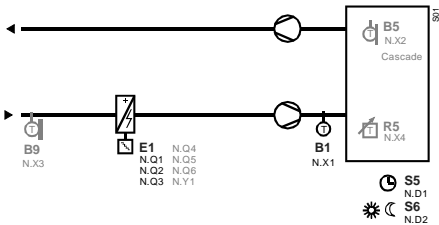


RLU236

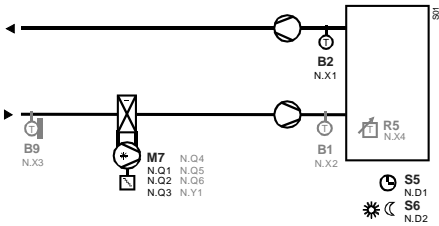
A01 (ADA007 LU3 HQ)



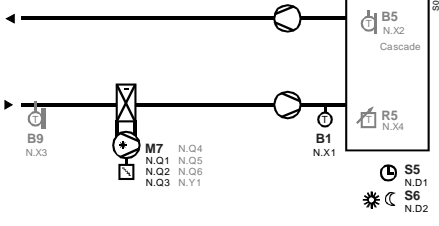
A02 (ADA013 LU3 HQ)



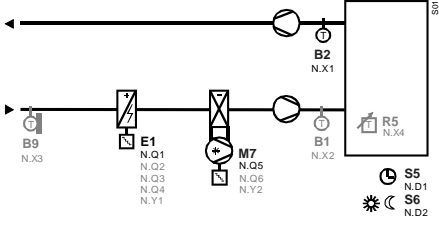
A03 (ADB004 LU3 HQ)



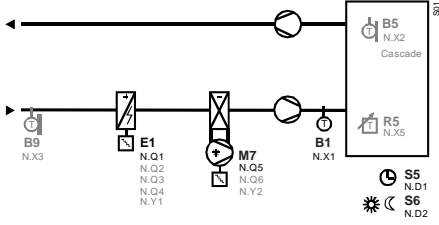
A04 (ADB008 LU3 HQ)



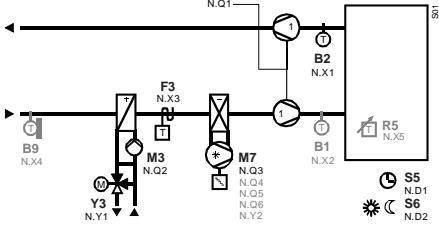
A05 (ADC005 LU3 HQ)



A06 (ADC013 LU3 HQ)

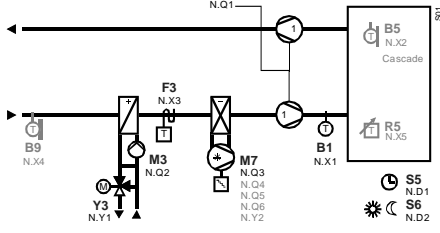


A07 (ADC008 LU3 HQ)

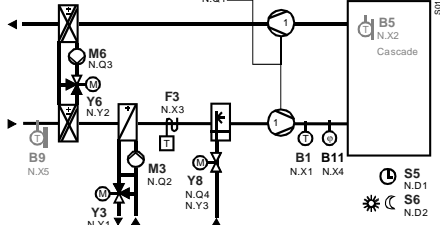


RLU236

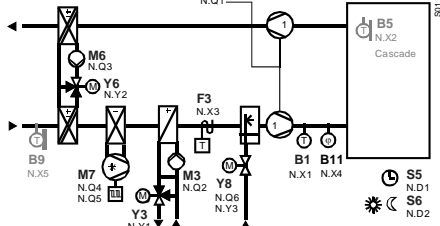
A08 (ADC017 LU3 HQ)



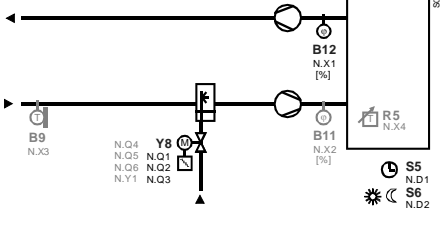
A09 (AEDL01 LU3 HQ)



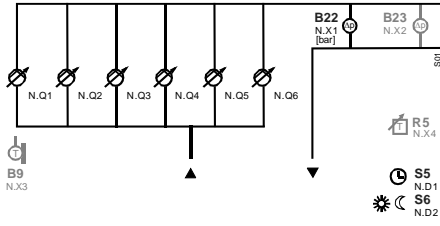
A10 (AEFL01 LU3 HQ)



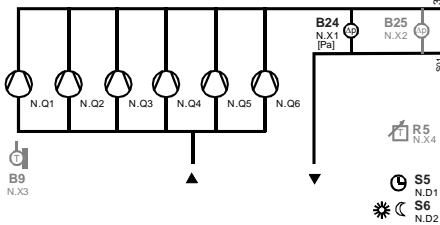
U01 (ADKA03 LU3 HQ)



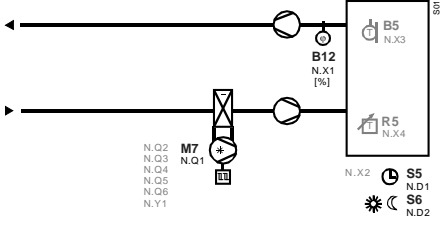
U02 (PB003 LU3 HQ)



U03 (AZL003 LU3 HQ)

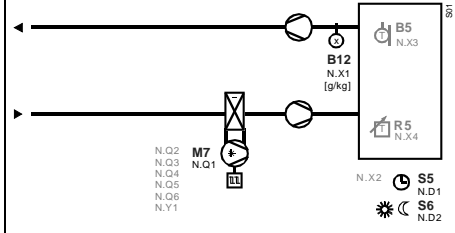


U04 (ADI004 LU3 HQ)

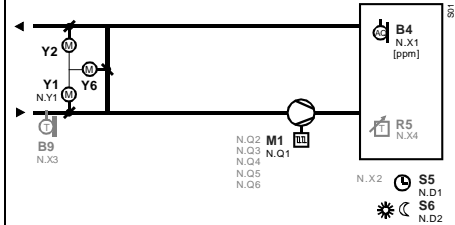


RLU236

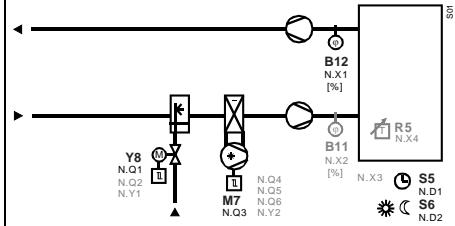
U05 (ADI006 LU3 HQ)



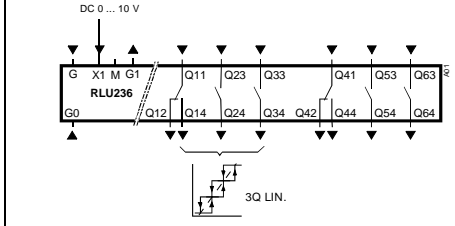
U06 (AAZD03 LU3 HQ)



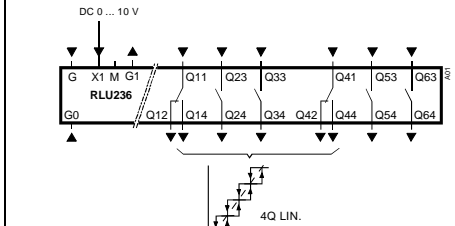
U07 (ADZA02 LU3 HQ)



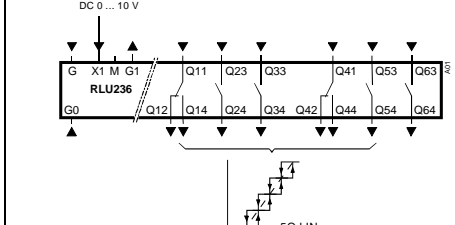
U08 (ZZZ006 LU3 HQ)



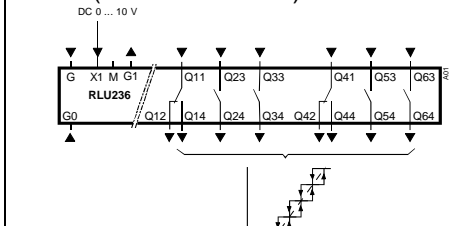
U09 (ZZZ007 LU3 HQ)



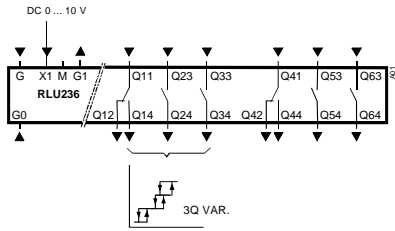
U10 (ZZZ008 LU3 HQ)



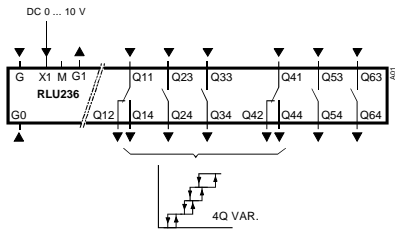
U11 (ZZZ009 LU3 HQ)



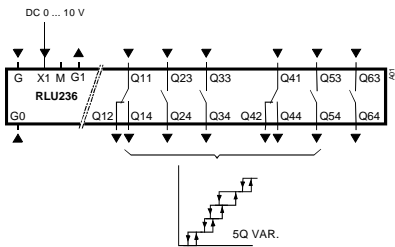
U12 (ZZZ010 LU3 HQ)



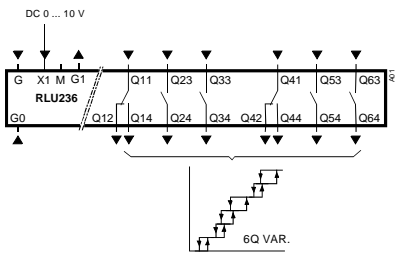
U13 (ZZZ011 LU3 HQ)



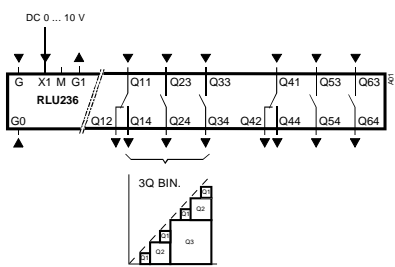
U14 (ZZZ012 LU3 HQ)



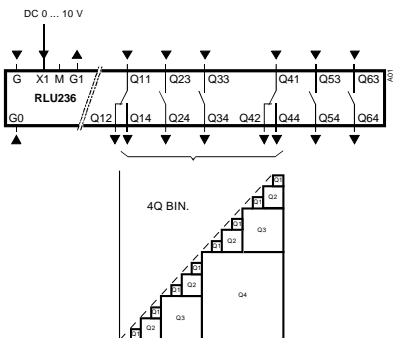
U15 (ZZZ013 LU3 HQ)



U16 (ZZZ014 LU3 HQ)



U17 (ZZZ015 LU3 HQ)



3101S17